

THROW PILLOWS

How easy to breath new life in your room simply
by mixing throw pillows.





Choosing throw pillows in new fabric and colors can give your space a totally different feel.



*Creative
Professional*

Simple print

Busy print

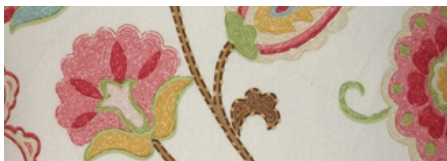
Solid color

Stripe

ENERGIZING COLORS

ONE COLOR DIFFERENT PATTERNS

To energize your room with
POP colors . A spicy orange
look extra rich and vibrant.





go for green



Choose one bold color,
velvet green, with botanical
pattern..

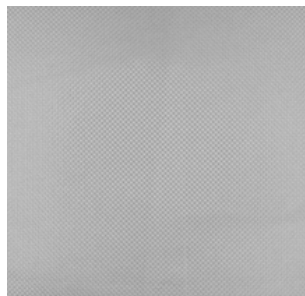


READYMADE PILLOWS



READYMADE PILLOWS

LET'S WORK
TOGETHER



Blue goes well with
anything, especially in tan or
gray couch.





BE BOLD



READYMADE PILLOWS

A trendy choice is to use black, gray and white, which can easily enhance a room's appearance.



Bring extra comfort to your couch.

PILLOW SET

501

*We make things easier for you to choose.
just find 2-3 shade that will work well for
your couch.*



READYMADE PILLOWS



o8

Bring extra comfort to your couch.

PILLOW SET

502

*We make things easier for you to choose.
just find 2-3 shade that will work well for your
couch.*



READYMADE PILOWSS



Bring extra comfort to your couch.

PILLOW SET *503*

*We make things easier for you to choose.
just find 2-3 shade that will work well for your
couch.*





Bring extra comfort to your couch.

PILLOW SET *504*

*We make things easier for you to choose.
just find 2-3 shade that will work well for
your couch.*



Together



READYMADE PILLOWS

*A collection that celebrates
moments of togetherness*

Duo set

READYMADE PILLOWS



2-pc set of 45x45cm in red
and 40x40 cm with pattern



2-pc set of 60x60 cm



BOLSTER *Creative Professional* PILLOW

HOW TO USE BOLSTER PILLOW

a bolster is usually placed at the head of one's bed and functions as head or lower back support, or as an arm support on furniture with high rigid sides. Bolster pillows are also used as bumpers in cribs and for lounging on the floor in family and children's rooms.





CONTACT

CRM 080-553-8777
Line @theclassicchair



WWW.CLASSICCHAIR.COM

