



The Classic Chair Company  
London

## MEDUSA HEAD SCULPTURE



Medusa head sculpture.

In Greek mythology, **Medusa** (Μέδουσα "guardian, protectress"), also called **Gorgo**, was one of the three monstrous Gorgons generally described as winged human females with living venomous snakes in place of hair. Those who gazed into her eyes would turn to stone. Medusa was beheaded by the Greek hero Perseus. There are many, many stories about her abilities, her life and her attributes.

She is most widely recognised today as the logo used by Versace. (The Versace siblings played in some ruins where the Medusa was depicted in the mosaic floor, near Reggio Calabria, in Italy Gianni Versace chose her as the logo because she made people fall in love with her, they had no way back.) Difficult, of course, once they had looked into her eyes and turned into stone.

Model : MI424

Dimensions (cm) : w20 d10 h27.5

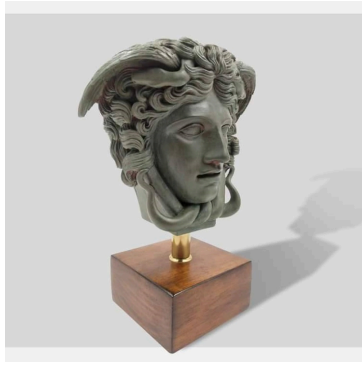
Materials : Resin, wood, steel

Finished : Natural plaster

Medusa head sculpture



The Classic Chair Company  
London



## PRODUCT DESCRIPTION

Medusa head sculpture.

In Greek mythology, **Medusa** (Μέδουσα "guardian, protectress"), also called **Gorgo**, was one of the three monstrous Gorgons generally described as winged human females with living venomous snakes in place of hair. Those who gazed into her eyes would turn to stone. Medusa was beheaded by the Greek hero Perseus. There are many, many stories about her abilities, her life and her attributes.

She is most widely recognised today as the logo used by Versace. (The Versace siblings played in some ruins where the Medusa was depicted in the mosaic floor, near Reggio Calabria, in Italy Gianni Versace chose her as the logo because she made people fall in love with her, they had no way back.) Difficult, of course, once they had looked into her eyes and turned into stone.

Model : MI424

Dimensions (cm) : w20 d10 h27.5

Materials : Resin, wood, steel

Finished : Natural plaster

Medusa head sculpture