



The Classic Chair Company  
London

### **DECORATED REGENCY CHAIR CH-SM**



Model: CH-SM

Decorated Regency chair is one of the few chosen from Classic Chairs' collection of Historical Furniture.

The decoration in the tablet back was the very popular neo-Classical theme. This fashion was sweeping through interior and architectural design at the time, partly as a reaction against the baroque, and also as a result of all the exciting new archaeological discoveries in Asia Minor, Greece and Italy. The scenes are of terracotta coloured Etruscan figures on a black japanned ground.

These were most probably copied from engravings and sketches of pottery decoration sent back from excavations, notably at Pompei in the second half of the 18th century.

The decorated Regency Chair has parcel-gilt detailing, notably a Greek key frieze to the front seat rail, along with fine painted white lines to accentuate all the myriad elements.

As with all caned seats, the chair should have a squab cushion.

Dimensions (mm): w 540 d 570 h 850, sh 480

Fabric required (m): 1.2m + pattern repeat

Optional: 4.5m flanged cord

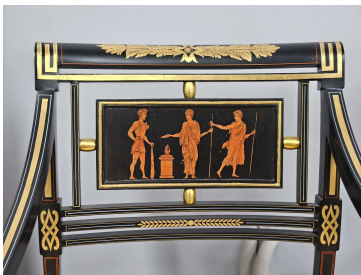
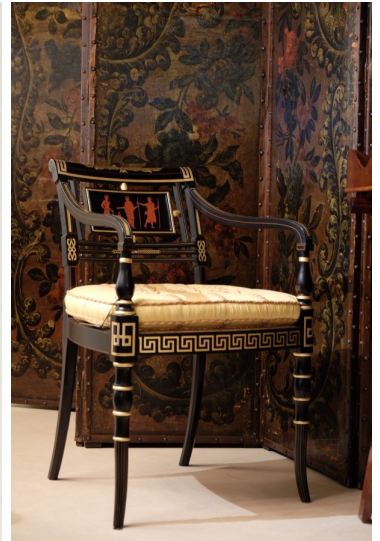


The Classic Chair Company

*Historical note:* A very similar design of this chair is attributed to Richard Smirke (1788-1815). This is illustrated in Nancy McClelland's masterly book "*Duncan Phyfe and the English Regency*". (New York, 1939) A copy of the illustration is shown here.



PLATE 63. ARMCHAIR BY RICHARD SMIRKE (1778-1815)  
Classic designs are painted in terra cotta on a brown-black ground.  
(Courtesy of Mrs. Johnson, Bowden Hall, Alsager, Cheshire)



## PRODUCT DESCRIPTION

Decorated Regency chair CH-SM



The Classic Chair Company

London

This appealing Regency chair is one of a very few chosen from Classic Chairs' Signature Collection of Historical Furniture. This is because it epitomises the Neo-classical craze sweeping through interior and architectural design at the time.