



The Classic Chair Company  
London

### **CHARCOAL STOOL TA-207**



Model : TA 207 Resin stool

Charcoal Stool TA 207

These types of stool were originally used throughout Asia for warm seating when charcoal was left banked up inside. Our version is made of resin: great for the outdoors but not for heating up!

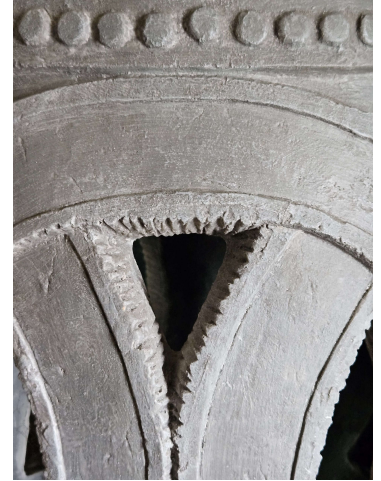
Dimension (mm) : D 390 H 530

Finish: mottled grey

Stock : in stock



The Classic Chair Company  
London



## PRODUCT DESCRIPTION

Charcoal Stool

Model TA 207

These types of stool were originally used throughout Asia for warm seating when charcoal was left banked up inside. Our version is made of resin: great for the outdoors but not for heating up!